

PSL

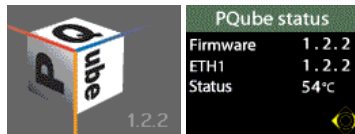
PQube[®] AC Power Monitor

Embedded power quality and energy monitoring

Firmware Upgrade Guide (via the SD card)

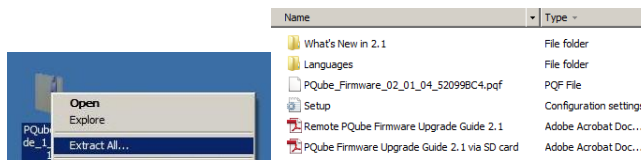
NOTE: Follow all of the directions in this guide carefully. Do not remove the SD card from your PQube while it is updating its firmware as it may cause damage to your SD card. A firmware update will not erase your existing settings or PQube data. Having trouble? Contact us at support@powerstandards.com.

1 Check that you are using firmware version 1.2.2 or newer



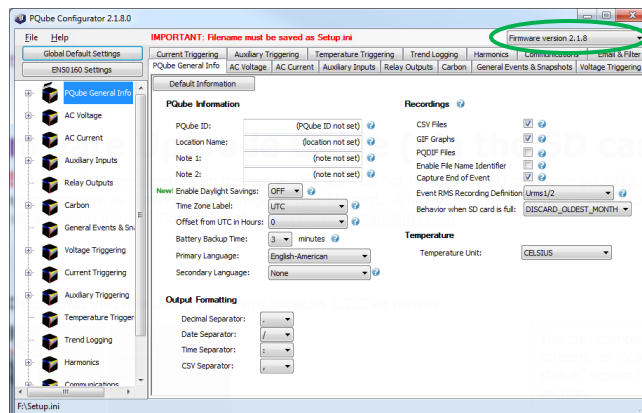
You can compare the start-up screens, or look at the "PQube status" screen in the "Meters" section.

2 Download and unzip the firmware upgrade package



Download the PQube Firmware Upgrade package from the PSL website at <http://www.powerstandards.com/PQube.php#firmware> to your PC or laptop and extract (unzip) all files.

3 Update your existing setup file with new 2.1.8 features



Using the Configurator Tool, transfer settings in your existing Setup.ini file to a new Setup.ini file. Download the Configurator Tool from the PSL website at

<http://www.powerstandards.com/PQube.php#config>

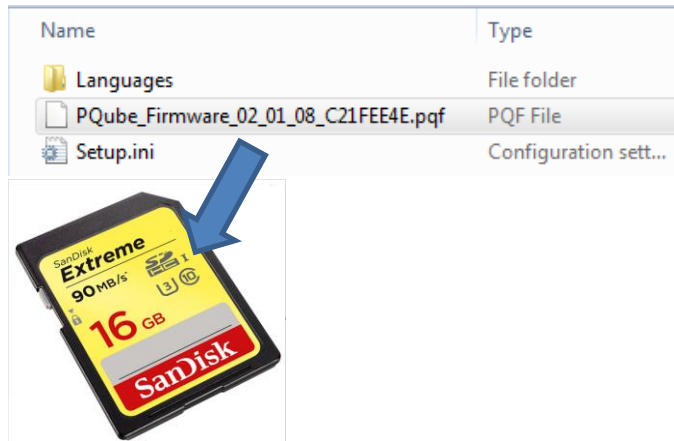
Click on 'File', 'Open', select your existing setup.ini file and it will load all your current settings into the Configurator Tool. Select Firmware version 2.1.8 from the dropdown box in the upper- right corner. This will enable the new 2.1.8 features in your setup.ini file.

To save your settings, click on 'File', 'Save'.

PSL

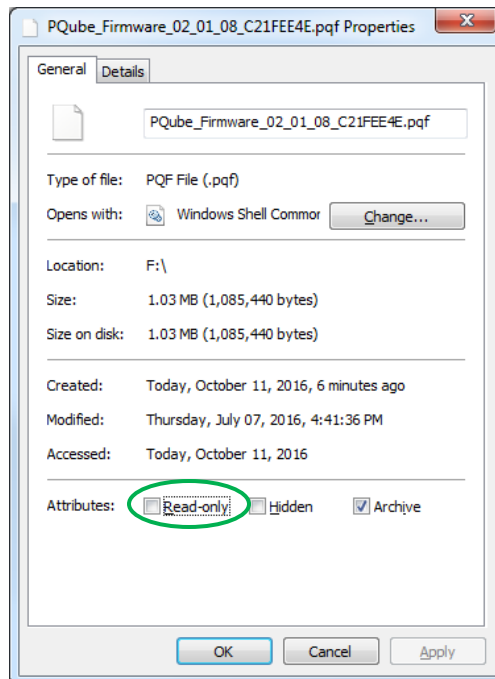


4 Copy files to your PQube's SD card



Copy the **Languages** folder, the **PQube Firmware file (PQF format)**, and transfer your **Setup.ini** onto the SD card. If you need a copy of the default Setup.ini file, you can download it at <http://www.powerstandards.com/Download/Setup.ini>.

5 Make sure that the firmware file is not read-only



Your PQube Firmware (.pqf) file must not be set to read-only. Right-click on the Firmware file on your SD card and select "properties". Make sure the "Read-only" box is not checked.

PSL

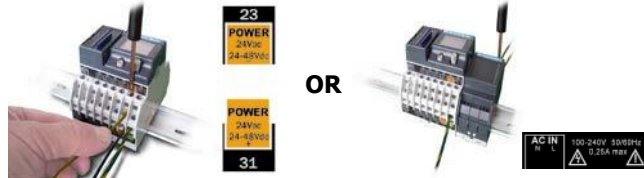


⑥ **Connect your ETH1 or CTE1 module if you have one**



If you have an ETH1 Ethernet or CTE1 module, make sure that it is connected to your PQube **before** beginning the upgrade. Your PQube will upgrade its own firmware and the ETH1/ CTE1 firmware at the same time. Both ETH1/CTE1 and PQube must be running the same firmware version.

⑦ **Connect your PQube to power**



24VAC or 24-48VDC power

PS1 or PS2 100~240VAC

Make sure that your PQube does not lose power during a firmware upgrade.

⑧ **Insert SD card into your PQube**



You are now ready to upgrade your PQube! Just insert your SD card into your PQube. It will reset and begin the firmware upgrade process automatically. The upgrade process should take no more than 3 minutes.

Scroll to the PQube status screen. Verify that your PQube is running the latest firmware. If yes, congratulations! You have successfully upgraded your PQube's firmware.